

Postal Code 78669

Residential Statistics



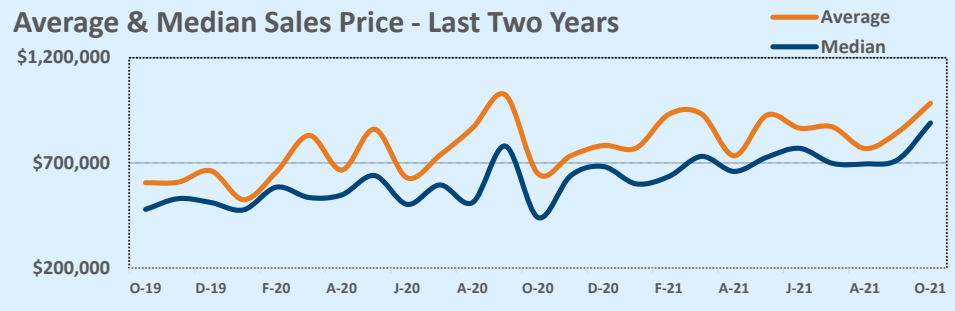
October 2021

Listings	This Month			Year-to-Date		
	Oct 2021	Oct 2020	Change	2021	2020	Change
Single Family Sales	34	23	+47.8%	302	329	-8.2%
Condo/TH Sales	1	--	--	6	4	+50.0%
Total Sales	35	23	+52.2%	308	333	-7.5%
New Homes Only	1	4	-75.0%	26	52	-50.0%
Resale Only	34	19	+78.9%	282	281	+0.4%
Sales Volume	\$34,433,300	\$14,910,675	+130.9%	\$266,612,164	\$251,951,897	+5.8%
New Listings	32	33	-3.0%	452	413	+9.4%
Pending	--	--	--	--	--	--
Withdrawn	4	2	+100.0%	22	30	-26.7%
Expired	4	2	+100.0%	22	30	-26.7%
Months of Inventory	1.8	3.7	-51.1%	N/A	N/A	--

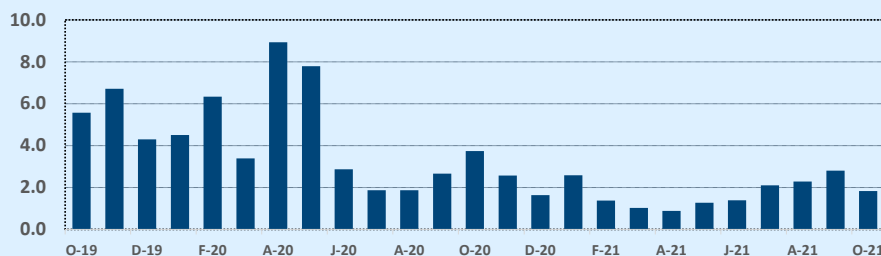
Price Range	This Month			Year-to-Date		
	New	Sales	DOM	New	Sales	DOM
\$149,999 or under	--	1	52	3	4	45
\$150,000- \$199,999	--	--	--	4	2	25
\$200,000- \$249,999	--	--	--	3	3	10
\$250,000- \$299,999	--	--	--	5	7	45
\$300,000- \$349,999	--	--	--	7	4	208
\$350,000- \$399,999	1	--	--	14	8	41
\$400,000- \$449,999	--	1	20	14	13	15
\$450,000- \$499,999	--	1	4	21	14	7
\$500,000- \$549,999	3	1	20	19	20	32
\$550,000- \$599,999	2	2	36	27	22	29
\$600,000- \$699,999	6	4	23	51	47	29
\$700,000- \$799,999	4	5	31	69	44	28
\$800,000- \$899,999	5	4	28	51	26	32
\$900,000- \$999,999	3	6	94	32	20	59
\$1M - \$1.99M	7	8	40	108	59	35
\$2M - \$2.99M	1	1	11	16	12	82
\$3M+	--	1	18	8	3	62
Totals	32	35	41	452	308	36

Average	This Month			Year-to-Date		
	Oct 2021	Oct 2020	Change	2021	2020	Change
List Price	\$994,912	\$667,154	+49.1%	\$859,293	\$787,035	+9.2%
List Price/SqFt	\$362	\$231	+56.5%	\$315	\$253	+24.8%
Sold Price	\$983,809	\$648,290	+51.8%	\$865,624	\$756,612	+14.4%
Sold Price/SqFt	\$359	\$223	+60.7%	\$319	\$244	+30.7%
Sold Price / Orig LP	98.8%	97.2%	+1.6%	101.9%	97.3%	+4.7%
Days on Market	41	53	-22.9%	36	98	-62.9%

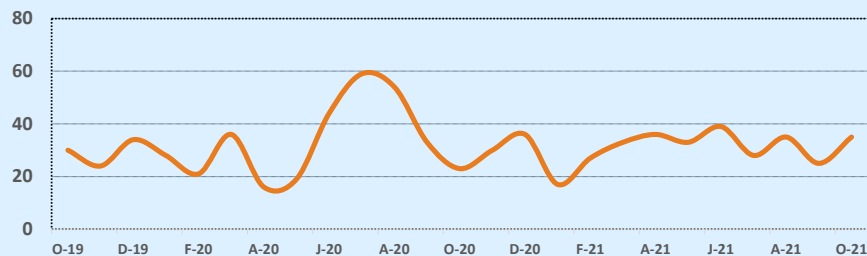
Median	This Month			Year-to-Date		
	Oct 2021	Oct 2020	Change	2021	2020	Change
List Price	\$887,500	\$450,000	+97.2%	\$699,950	\$570,000	+22.8%
List Price/SqFt	\$289	\$194	+48.9%	\$270	\$212	+27.2%
Sold Price	\$890,000	\$440,000	+102.3%	\$712,703	\$565,000	+26.1%
Sold Price/SqFt	\$287	\$196	+47.0%	\$272	\$205	+32.8%
Sold Price / Orig LP	100.0%	98.4%	+1.6%	100.0%	98.5%	+1.5%
Days on Market	23	33	-30.3%	9	48	-81.3%



Months of Inventory - Last Two Years



Number of Sales - Last Two Years



Based on information from the Austin Board of REALTORS® (alternatively, from ACTRIS). Neither the Board nor ACTRIS guarantees or is in any way responsible for its accuracy. The Austin Board of REALTORS®, ACTRIS and their affiliates provide the MLS and all content therein "AS IS" and without any warranty, express or implied. Data maintained by the Board or ACTRIS may not reflect all real estate activity in the market.